

PURPOSE-BUILT FROM THE GROUND UP



# 738E M MATERIAL HANDLER



Cummins QSB 6.7, Tier 4F  
225 HP (168 kW)



Rubber Tired (M)  
95,700 lb (43,500 kg)

# SENNEBOGEN®



# 738 M “E” Technical Specifications

ENGINE	
model	Cummins QSB 6.7 C225
type	in-line, 6 cylinder, cooled exhaust gas recirculation, water cooled
emission	EPA Tier 4 Final
net power	225 HP (168 kW) @ 2,000 rpm
injection	high pressure common-rail
displacement	408 cu. in. (6.7 L)
bore	4.21 in (107 mm)
stroke	4.88 in (124 mm)
aspiration	turbo charged, charge air cooled
fuel tank	132 gal (500 L)
air filtration	direct flow filtration system dual stage filter with pre-filter
control	integrated ECM automatic idle - stop eco mode
SWING SYSTEM	
swing speed	0 - 8 rpm
swing hydraulic	open loop
drive	1 x axial piston motor driving planetary gearbox, integrated brake valves
swing brake	multidisc brake, spring loaded
swing bearing	external teeth, sealed ball bearing
COOLING	
cooling type	cool-on-demand, suction-type fan system, side by side
hydraulic / water	hydraulic fan drive axial piston pump, reversible fan thermostatically controlled, closed loop system
charge air	direct fan drive
UPPER CARRIAGE	
design	torsion-free upper frame with continuous bearing plates from boom linkage to counterweight, lockable storage compartment, sound attenuation for reduced in-cab noise emission

TRAVEL / UNDERCARRIAGE	
type	rubber tired MP30E
drive system	all-wheel drive, variable displacement motor with dual stage power shift transmission
travel speed	1 <sup>st</sup> 0-4.35 mph (0-7 km/h) 2 <sup>nd</sup> 0-12.43 mph (0-20 km/h)
steering	joystick steering
design	robust undercarriage with 4-point outrigger or combination of stabilizer blade and outrigger, independent actuation
front axle	oscillating with hydraulic lock, integrated safety check valves
rear axle	fixed
tires	pneumatic tires 650/65R25 (4 units)
HYDRAULIC SYSTEM	
system type	LUDV load sensing pilot pressure controlled open center
pump type	variable-displacement axial-piston pump
pump control	zero-stroke control with on-demand flow control. provides load limit sensing control
operating pressure	5076 psi (350 bar)
filtration system	dual filtration system 3 micron (HydroClean)
hydraulic tank	82 gal (310 L)
control system	proportional, precision hydraulic actuation of work movements using 2 hydraulic servo joysticks. Additional function with switches and pedals
attachment pump	additional piston pump for attachment independent from the main pump allowing proper operation of attachments that require high oil flow like mulchers or mowers
WEIGHT	
operating weight	95,700 lb (43,500 kg)

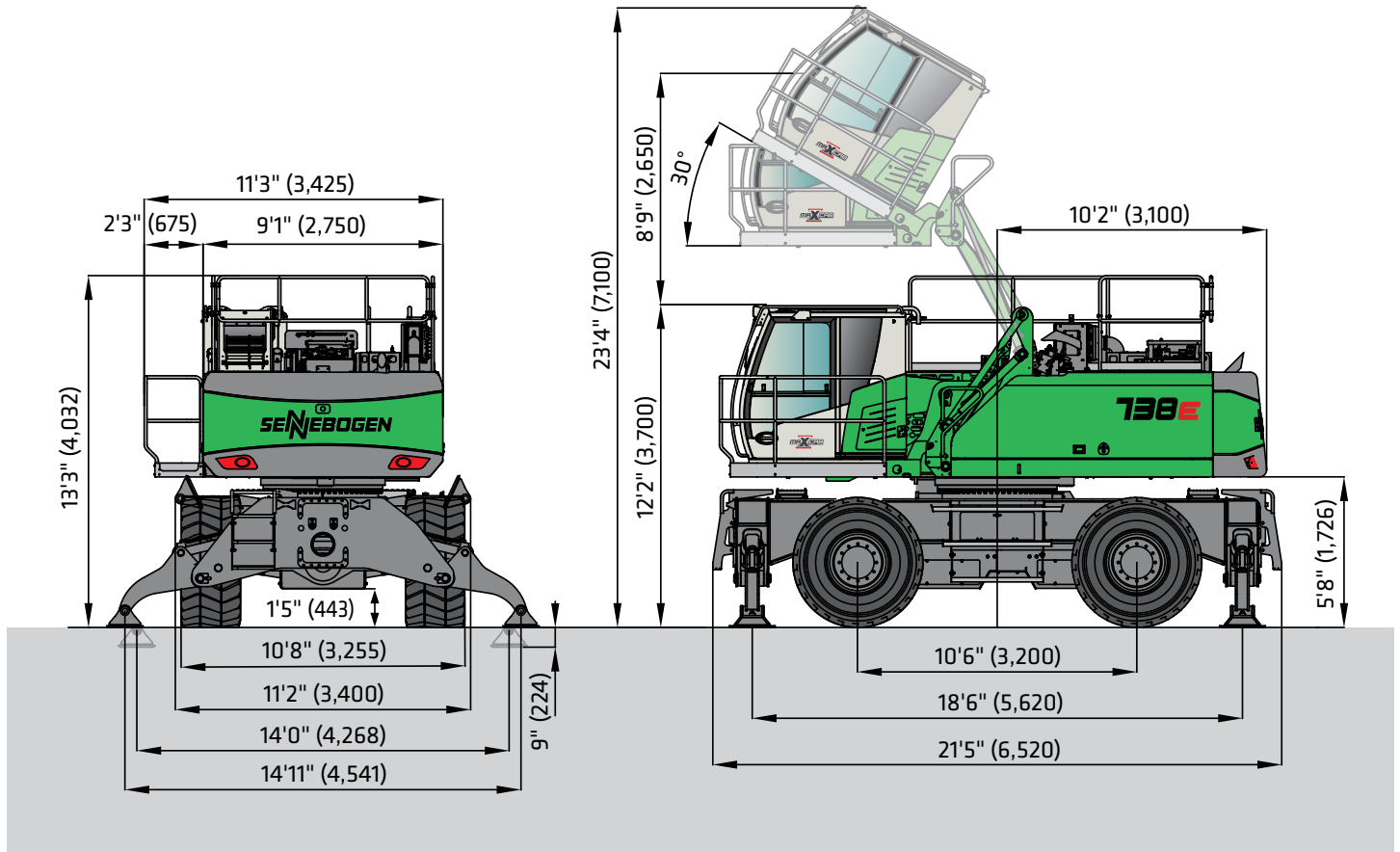
# 738 M “E” Standard / Optional Equipment

ENGINE	SWING SYSTEM	UNDERCARRIAGE
Water separator in fuel line ●	Automatic lubrication system ●	Robust designed material handling under carriage ●
Automatic idle / engine stop control ●		Heavy duty axles ●
Eco mode ●	<b>OPERATOR'S CAB (Maxcab)</b>	Solid rubber tires 12.00-20 (8x) incl. intermediate ring ●
Air Filter Pre-cleaner ●	Hydraulic elevating cab system E270 ●	Front axle automatic oscillating axle unlock (travel position) ●
Visual fuel tank check ●	30° tilting cab system ●	Dual stage power shift transmission ●
Heated water separator ●	Multi adjustable, air suspended operator's seat 3" (76 mm) seat belt ●	Drive train protection guards ●
Engine block pre-heater ○	Seat heater ●	Travel alarm ●
	Automatic climate control (heater / AC) ●	Centralized lubrication points ●
	Air outlets w / defroster ●	Servo brake system ●
	Storage area for lunch box ●	4-point outriggers ●
	Large cup holder ●	Integrated safety check valves in outrigger cylinders ●
	Fire extinguisher ●	Tool and storage compartments, lockable ●
	Tinted windows with safety glass ●	Individual outrigger control ●
	Door window as sliding window ●	Increased size outrigger pads to decrease ground pressure ●
	Radio with USB and SD port, MP3 and Bluetooth ●	Below grade, bent outrigger legs ●
	Removable floor mat ●	Pneumatic tires 650/65R25 (4 units) ●
	SenCon diagnostic system ●	Supporting blade and 2 point outriggers ○
	Multicolor Monitor ●	Towing hitch package ○
	Halogen light package on cab roof ●	Winch system ○
	Sliding door ●	
	Catwalk w / handrail ●	<b>ATTACHMENTS</b>
	12 V / 24 V power outlet ●	Tilt Rotator (Tilting +/- 90°   Rotating +/- 140°) ●
	Windshield wiper and washers ●	Heavy duty grapple saw .47 yd <sup>3</sup> (.36 m <sup>2</sup> ) ●
	Emergency exit hammer ●	Mulcher ○
	Safety lever ●	Mower ○
	Sun shades ●	
	Interior lighting ●	<b>WORKING EQUIPMENT</b>
	Rain cover front window ●	Attachment hydraulic line connections ●
	Outside mirror ●	Safety check valves for boom cylinders ●
	Optical and acoustic warning system ●	Cylinder end position dumping ●
	Positive filtered ventilation (pressurized cab) ●	Bronze bushings connected to automatic lubrication system ●
	Safety check valves for elevating cab cylinder ●	Stick limiters ●
	Foot rest ●	Boom limiters ○
	Windshield protection guard ●	LED light package boom ○
	Bulletproof windshield ●	LED light package stick ○
	Bulletproof skylight ●	
	Skylight protection guard ●	
	Skylight FOPS guard ○	
	Polycarbonate side windows ○	
	Additional light package ○	
	Additional cameras ○	
<b>ELECTRIC</b>		
Battery disconnect switch ●		
Centralized fuse box ●		
Battery jump start connection from ground level ●		
<b>HYDRAULIC</b>		
Pilot pressure controlled variable displacement pump ●		
Thermostatically controlled cooling system ●		
Centralized hydraulic test ports ●		
Protection covers for pilot pressure control valves ●		
3 micron dual filtration system (HydroClean) ●		
Load sensing, flow on demand hydraulic system ●		
Optimized hydraulic pump regulation (GLR) ●		
Visual hydraulic tank check from ground level ●		
Attachments open, close & rotation hydraulics ●		
Hydraulic tank shut off valve ●		
Dedicated hydraulic pump for high flow attachments ●		
Biodegradable hydraulic oil ●		
Electrical hydraulic tank pre-heater ○		
Additional hydraulic circuits ○		
<b>UPPER CARRIAGE</b>		
Rearview & right side view camera system ●		
Automatic lubrication system ●		
Anti-slip mats on walking area ●		
Lockable side doors ●		
Handrails on top of upper carriage ●		
Mirror left side ●		
Turning signal lights in upper carriage frame ●		
Removable panels ●		
Additional light package ○		

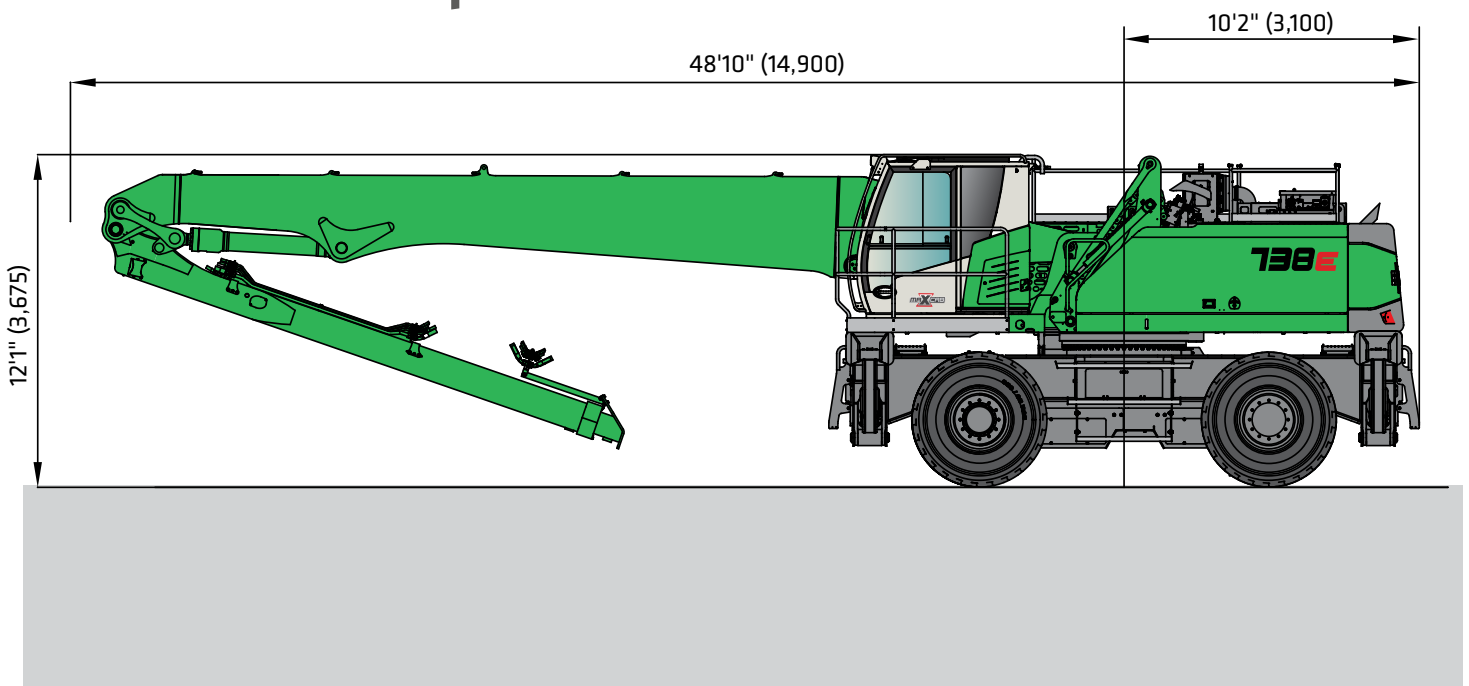
Subject to technical modification.

Standard Equipment ● Optional Equipment ○

# 738 M "E" Dimensions

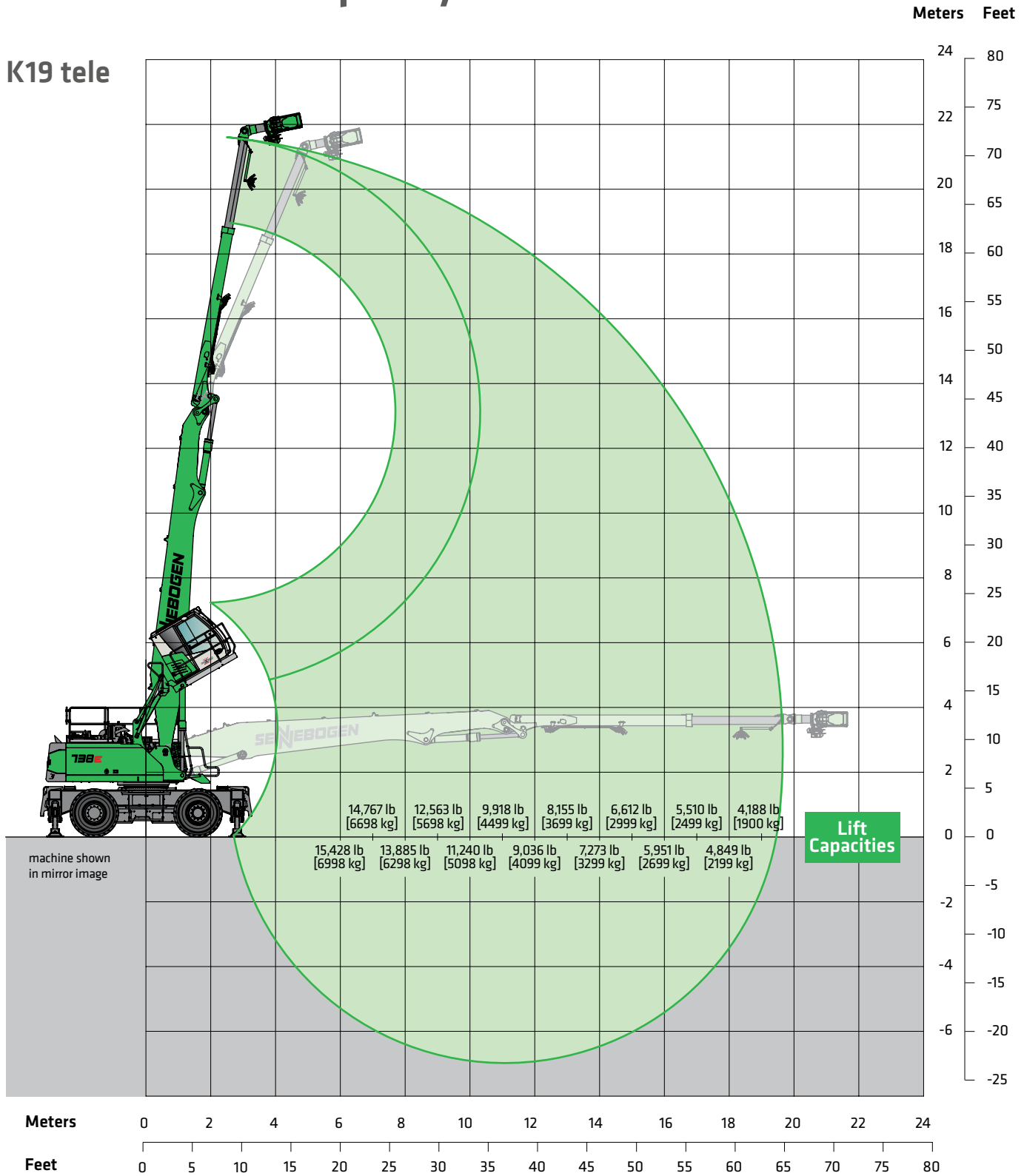


# 738 M "E" Transport Dimensions



# 738 M "E" Lift Capacity & Reach

K19 tele



Lift capacities are in lb and [kg] and are 75% of the static tipping load or 87% of the hydraulic lifting force in accordance with ISO 10567, and apply at the required operating temperature in the Green Hybrid system. They apply on firm and level ground and 360° slewing. Attachments such as orange-peel grabs, magnets, etc. are included in the load capacity. In accordance with harmonized EU standard EN 474-5, hydraulic excavators used for hoisting must be equipped with pipe fracture safety devices on the hoist cylinders and an overload warning device.

# OUR COMPLETE LINE OF **PURPOSE-BUILT MATERIAL HANDLERS**

