



728E

TREE CARE HANDLER



Cummins B6.7, Tier 4F
173HP (129kW)



Rubber Tired (M) - 76,060 lbs (34,500 kg)



Crawler (R-HD) - 88,818 lbs (40,287 kg)

You told us that our new tree-care machines are a game-changer.

NOW, WE'RE UPPING OUR GAME!

SENNEBOGEN 728 TREE-CARE HANDLER

The new 728 purpose-built tree-care handler combines the best of the original 718 and 738 machines:



Extended reach

Reach up to 65 feet with the 728's telescoping boom to put its powerful grapple-saw right where you need it. That's 22 feet more than the 718 and just 10 feet short of the big 738.



Easy transportability

The 728 is as mobile as the 718, able to self-load onto most standard low-boy trailers and the 728 M can travel on public roadways without waivers. The 728 M is able to move into position and between job locations at better than 12 mph.



Game-changing productivity

Comparable to the 718, the 728 handles 25% more weight at its maximum height (16,000 lb total) – enough to move and stack large limbs or whole trees in a single, efficient step.



Smooth Power

Driven by the same 173 HP Cummins Tier 4F engine as the 738, the hydraulic system of the 728 has ample power to run heavy-duty grapple-saws, mowers and other attachments, with all the agility you need for precise pruning, felling, trimming, and stacking.



Comfort and Safety

The elevating and tilting Maxcab allows operators a wide-angle view of the worksite and a direct look into the cutting zone, safely enclosed in a climate-controlled workstation.



HEALTH & SAFETY: THE FIRST STEP TO PRODUCTIVITY

The SENNEBOGEN 728 E rubber tired and tracked models bring a new standard of safety to urban forestry, arboriculture, storm clean-up, and woodlot maintenance. The 728's 65 ft. (20 m) boom and simple, intuitive controls extend the arborist's reach to perform a full range of cutting, pruning and handling tasks while working from the safety and comfort of the enclosed cab.

SENNEBOGEN is renowned as the industry leader in preventing downtime, and in protecting people.

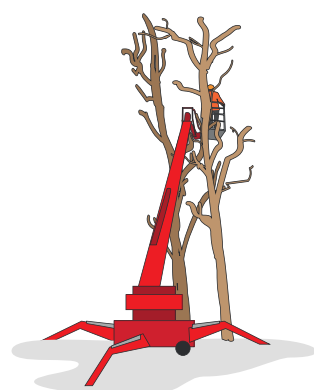
SENNEBOGEN works closely with the operators and technicians who know our equipment best, and we listen to their ideas to make our machines the safest on any jobsite.

The SENNEBOGEN 728 E avoids the disadvantages of alternative felling techniques, while taking down trees up to 5x faster, under full control.



Rope climbing equipment/arborists

- Higher personnel costs
- Greater risk



Aerial work platforms

- Shorter range
- Little control when placing logs



Telescopic handler in combination with grab saw

- Lower load capacities
- Less performance



728 M “E” Technical Specifications

ENGINE	
model	Cummins B6.7
type	inline 6 cylinder, direct injection
emission	EPA Tier 4 Final
net power	173HP (129kW) @ 2200 rpm
displacement	409 cu.in. (6.7 L)
bore	4.21 in (107 mm)
stroke	4.88 in (124 mm)
aspiration	turbo charged, charge air cooled
fuel tank	118 gal (450 L)
air filtration	2 stage air filtration system
control	integrated ECM automatic idle - stop eco mode
SWING SYSTEM	
swing speed	0 - 8 rpm
swing hydraulic	open loop
drive	1 x axial piston motor driving planetary gearbox, integrated brake valves
swing brake	multidisc brake, spring applied
swing bearing	internal teeth, sealed triple roller bearing
COOLING	
cooling type	thermostatically controlled
hydraulic / water after cooler	side by side
charge air	direct fan drive
UPPER CARRIAGE	
robust design	torsion-free upper frame with high strength one piece steel plates
TRAVEL / UNDERCARRIAGE	
type	rubber tired MP28E
drive system	all-wheel drive, variable displacement motor with dual stage power shift transmission
travel speed	0-12.43 mph (0-20 km/h)
steering	joystick steering
design	robust undercarriage with 4-point outrigger or combination of stabilizer blade and outrigger, independent actuation
front axle	oscillating with hydraulic lock, integrated safety check valves
rear axle	fixed
tires	pneumatic tires 550/65-R25

HYDRAULIC SYSTEM	
system type	load sensing hydraulic system with hydraulic pilot control
pump type	variable displacement axial piston pump
pump control	on demand load sensing control
operating pressure	5076 psi (350 bar)
filtration system	Return filtration system with an additional 3 micron (HydroClean)
hydraulic tank	108 gal (410 L)
hydraulic delivery rate	54 gal/min (205 L/min)
control system	proportional, precision hydraulic actuation of work movements using 2 hydraulic servo joysticks. Additional function with switches and pedals
attachment pump	additional piston pump for attachment independent from the main pump allowing proper operation of attachments that require high oil flow like mulchers or mowers
WEIGHT	
operating weight	76,060 lbs (34,500 kg)

728 M “E” Standard / Optional Equipment

ENGINE	
Water separator in fuel line	●
Automatic idle / engine stop control	●
Eco mode	●
Air Filter Pre-cleaner	●
Visual fuel tank check	●
Heated water separator	●
Engine block pre-heater	○

ELECTRIC	
Battery disconnect switch	●
Centralized fuse box	●
Battery jump start connection from ground level	●

HYDRAULIC	
Pilot pressure controlled variable displacement pump	●
Thermostatically controlled cooling system	●
Centralized hydraulic test ports	●
Protection covers for pilot pressure control valves	●
3 micron dual filtration system (HydroClean)	●
Load sensing, flow on demand hydraulic system	●
Optimized hydraulic pump regulation (GLR)	●
Visual hydraulic tank check from ground level	●
Attachments open, close & rotation hydraulics	●
Hydraulic tank shut off valve	●
Dedicated hydraulic pump for high flow attachments	●
Biodegradable hydraulic oil	●
Electrical hydraulic tank pre-heater	○
Additional hydraulic circuits	○

UPPER CARRIAGE	
Rearview & right side view camera system	●
Automatic lubrication system	●
Anti-slip mats on walking area	●
Lockable side doors	●
Handrails on top of upper carriage	●
Mirror left side	●
Turning signal lights in upper carriage frame	●
Removable panels	●
Additional light package	○

OPERATOR'S CAB (Maxcab)	
Hydraulic elevating cab system E270	●
30° tilting cab system	●
Multi-adjustable, air suspended operator's seat 3" (76 mm) seat belt	●
Seat heater	●
Automatic climate control (heater / AC)	●
Air outlets w / defroster	●
Storage area for lunch box	●
Large cup holder	●
Fire extinguisher	●
Tinted windows with safety glass	●
Door window as sliding window	●
Radio with USB and SD port, MP3 and Bluetooth	●
Removable floor mat	●
SenCon diagnostic system	●
Multicolor Monitor	●
Halogen light package on cab roof	●
Sliding door	●
Catwalk w / handrail	●
12 V / 24 V power outlet	●
Windshield wiper and washers	●
Emergency exit hammer	●
Safety lever	●
Sun shades	●
Interior lighting	●
Rain cover front window	●
Outside mirror	●
Optical and acoustic warning system	●
Positive filtered ventilation (pressurized cab)	●
Safety check valves for elevating cab cylinder	●
Foot rest	●
Windshield protection guard	●
Bulletproof windshield	●
Bulletproof skylight	●
Skylight protection guard	●
Skylight FOPS guard	○
Polycarbonate side windows	○
Additional light package	○
Additional cameras	○

SWING SYSTEM	
Automatic lubrication system	●

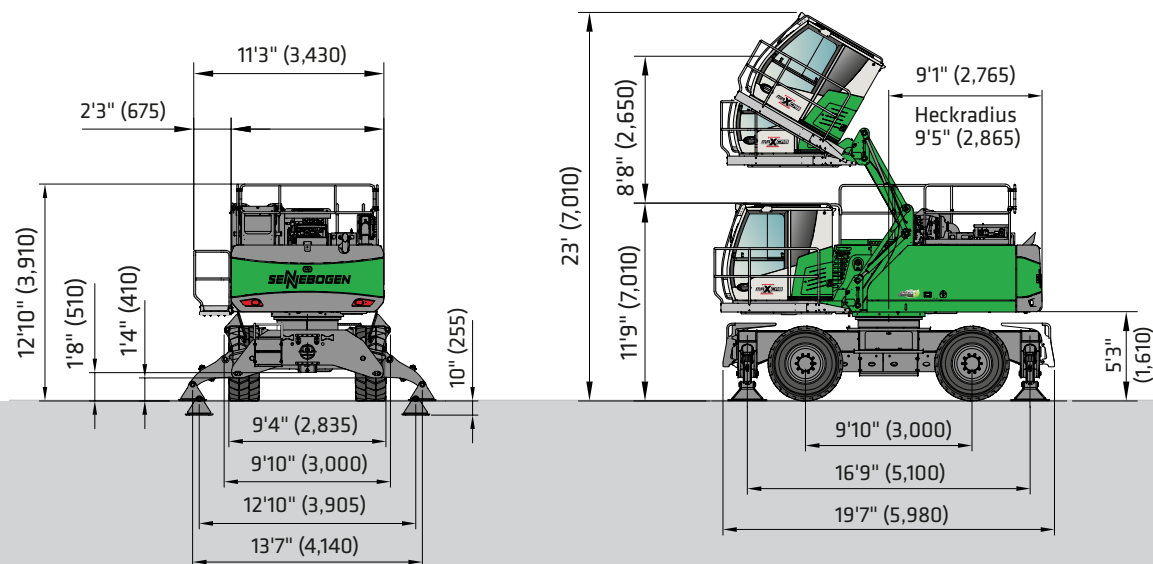
UNDERCARRIAGE	
Robust designed material handling undercarriage	●
Heavy-duty axles	●
Front axle automatic oscillating axle unlock (travel position)	●
Dual stage power shift transmission	●
Drivetrain protection guards	●
Travel alarm	●
Centralized lubrication points	●
Servo brake system	●
4-point outriggers	●
Integrated safety check valves in outrigger cylinders	●
Tool and storage compartments, lockable	●
Individual outrigger control	●
Increased size outrigger pads to decrease ground pressure	●
Below grade, bent outrigger legs	●
Pneumatic tires 650/65R25	●
Supporting blade and 2-point outriggers	○
Towing hitch package	○
Winch system	○

ATTACHMENTS	
Tilt Rotator (Tilting +/- 90° Rotating +/- 140°)	●
Heavy-duty grapple-saw .47 yd³ (.36 m²)	●
Mulcher	○
Mower	○

WORKING EQUIPMENT	
Attachment hydraulic line connections	●
Safety check valves for boom cylinders	●
Cylinder end position dumping	●
Bronze bushings connected to automatic lubrication system	●
Stick limiters	●
Boom limiters	○
LED light package boom	○
LED light package stick	○

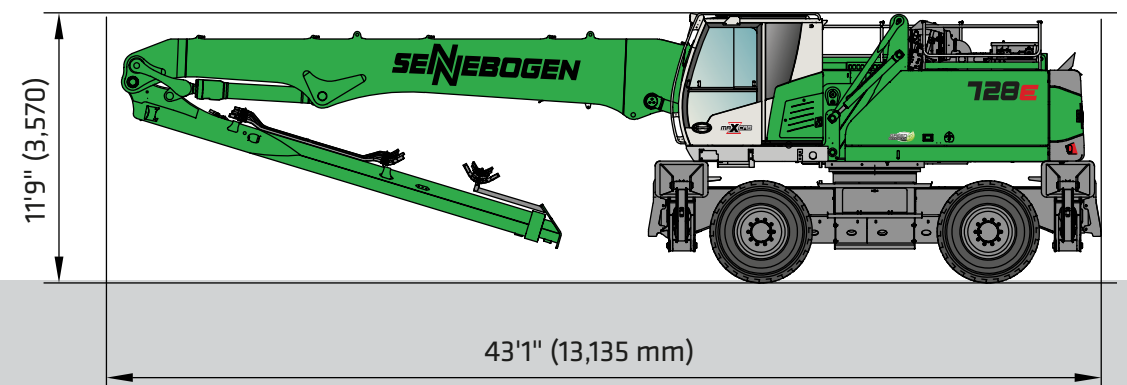
Standard Equipment ● Optional Equipment ○

728 M “E” Dimensions



Dimensions in (mm)

728 M “E” Transport Dimensions



Outrigger pads must be removed during transport.

Subject to technical modification.

728 R-HD “E” Technical Specifications

ENGINE	
model	Cummins B6.7
type	inline 6 cylinder, direct injection
emission	EPA Tier 4 Final
net power	173HP (129kW) @ 2200 rpm
displacement	409 cu.in. (6.7 L)
bore	4.21 in (107 mm)
stroke	4.88 in (124 mm)
aspiration	turbo charged, charge air cooled
fuel tank	118 gal (450 L)
air filtration	2 stage air filtration system
control	integrated ECM automatic idle - stop eco mode
SWING SYSTEM	
swing speed	0 - 8 rpm
swing hydraulic	open loop
drive	1 x axial piston motor driving planetary gearbox, integrated brake valves
swing brake	multidisc brake, spring applied
swing bearing	internal teeth, sealed triple roller bearing

COOLING	
cooling type	thermostatically controlled
hydraulic / water after cooler	side by side
charge air	direct fan drive
UPPER CARRIAGE	
robust design	torsion-free upper frame with high strength one piece steel plates
TRAVEL / UNDERCARRIAGE	
type	crawler T41/380 special
drive system	all-wheel drive, variable displacement motor with dual stage power shift transmission
travel speed	0-2.1 mph (0-3.4 km/h)
design	independant driven by an axial piston motor through a compact planetary
shoes	27.6" (700 mm)
crawler	B6
steering	foot pedals/levers
safety	travel alarm

HYDRAULIC SYSTEM	
system type	load sensing hydraulic system with hydraulic pilot control
pump type	variable displacement axial piston pump
pump control	on demand load sensing control
operating pressure	5076 psi (350 bar)
filtration system	Return filtration system with an additional 3 micron (HydroClean)
hydraulic tank	108 gal (410 L)
hydraulic delivery rate	54 gal/min (205 L/min)
control system	proportional, precision hydraulic actuation of work movements using 2 hydraulic servo joysticks. Additional function with switches and pedals
attachment pump	additional piston pump for attachment independent from the main pump allowing proper operation of attachments that require high oil flow like mulchers or mowers
WEIGHT	
operating weight	88,818 lbs (40,287 kg)

728 R-HD “E” Standard / Optional Equipment

ENGINE	
Water separator in fuel line	●
Automatic idle / engine stop control	●
Eco mode	●
Air Filter Pre-cleaner	●
Visual fuel tank check	●
Heated water separator	●
Engine block pre-heater	○

ELECTRIC	
Battery disconnect switch	●
Centralized fuse box	●
Battery jump start connection from ground level	●

HYDRAULIC	
Pilot pressure controlled variable displacement pump	●
Thermostatically controlled cooling system	●
Centralized hydraulic test ports	●
Protection covers for pilot pressure control valves	●
3 micron dual filtration system (HydroClean)	●
Load sensing, flow on demand hydraulic system	●
Optimized hydraulic pump regulation (GLR)	●
Visual hydraulic tank check from ground level	●
Attachments open, close & rotation hydraulics	●
Hydraulic tank shut off valve	●
Dedicated hydraulic pump for high flow attachments	●
Biodegradable hydraulic oil	●
Electrical hydraulic tank pre-heater	○
Additional hydraulic circuits	○

UPPER CARRIAGE	
Rearview & right side view camera system	●
Automatic lubrication system	●
Anti-slip mats on walking area	●
Lockable side doors	●
Handrails on top of upper carriage	●
Mirror left side	●
Turning signal lights in upper carriage frame	●
Removable panels	○
Additional light package	○

OPERATOR'S CAB (Maxcab)	
Hydraulic elevating cab system E270	●
30° tilting cab system	●
Multi-adjustable, air suspended operator's seat 3" (76 mm) seat belt	●
Seat heater	●
Automatic climate control (heater / AC)	●
Air outlets w / defroster	●
Storage area for lunch box	●
Large cup holder	●
Fire extinguisher	●
Tinted windows with safety glass	●
Door window as sliding window	●
Radio with USB and SD port, MP3 and Bluetooth	●
Removable floor mat	●
SenCon diagnostic system	●
Multicolor Monitor	●
Halogen light package on cab roof	●
Sliding door	●
Catwalk w / handrail	●
12 V / 24 V power outlet	●
Windshield wiper and washers	●
Emergency exit hammer	●
Safety lever	●
Sun shades	●
Interior lighting	●
Rain cover front window	●
Outside mirror	●
Optical and acoustic warning system	●
Positive filtered ventilation (pressurized cab)	●
Safety check valves for elevating cab cylinder	●
Foot rest	●
Windshield protection guard	●
Bulletproof windshield	●
Bulletproof skylight	●
Skylight protection guard	●
Skylight FOPS guard	○
Polycarbonate side windows	○
Additional light package	○
Additional cameras	○

SWING SYSTEM	
Automatic lubrication system	●

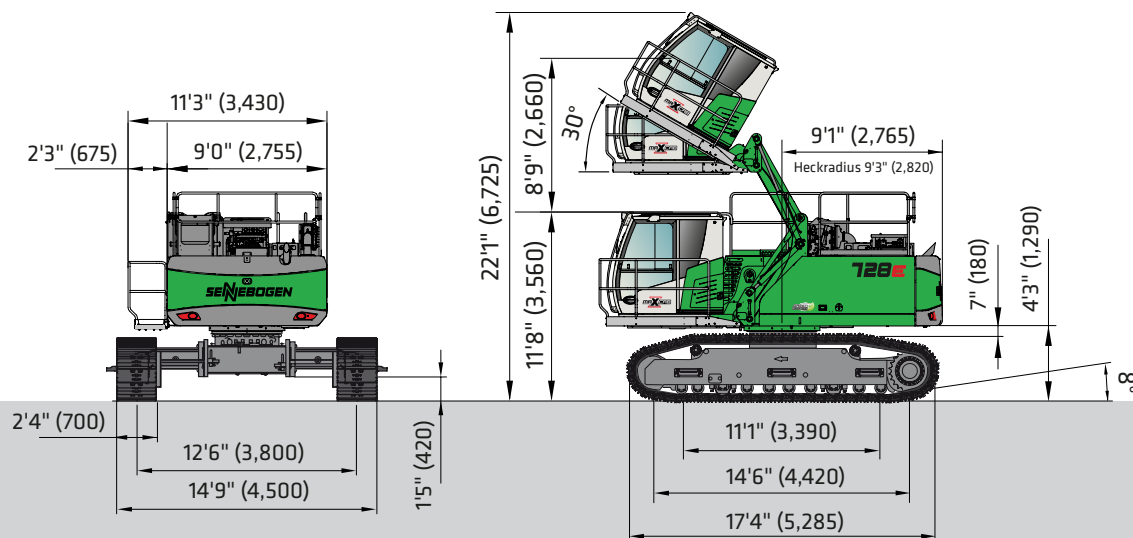
UNDERCARRIAGE	
Crawler undercarriage with mechanical fixed tracks	●
Heavy-duty crawler track frame	●
27.6" (700 mm) track shoes, skewed	●
Maintenance-free crawler B6	●
Hydraulic chain tension device	●
Travel alarm	●
Centralized lubrication points	●
Tool and storage compartments, lockable	●
Supporting blade	○
Winch system	○

ATTACHMENTS	
Tilt Rotator (Tilting +/- 90° Rotating +/- 140°)	●
Heavy-duty grapple-saw .47 yd³ (.36 m³)	●
Mulcher	○
Mower	○

WORKING EQUIPMENT	
Attachment hydraulic line connections	●
Safety check valves for boom cylinders	●
Cylinder end position dumping	●
Bronze bushings connected to automatic lubrication system	●
Stick limiters	●
Boom limiters	○
LED light package boom	○
LED light package stick	○

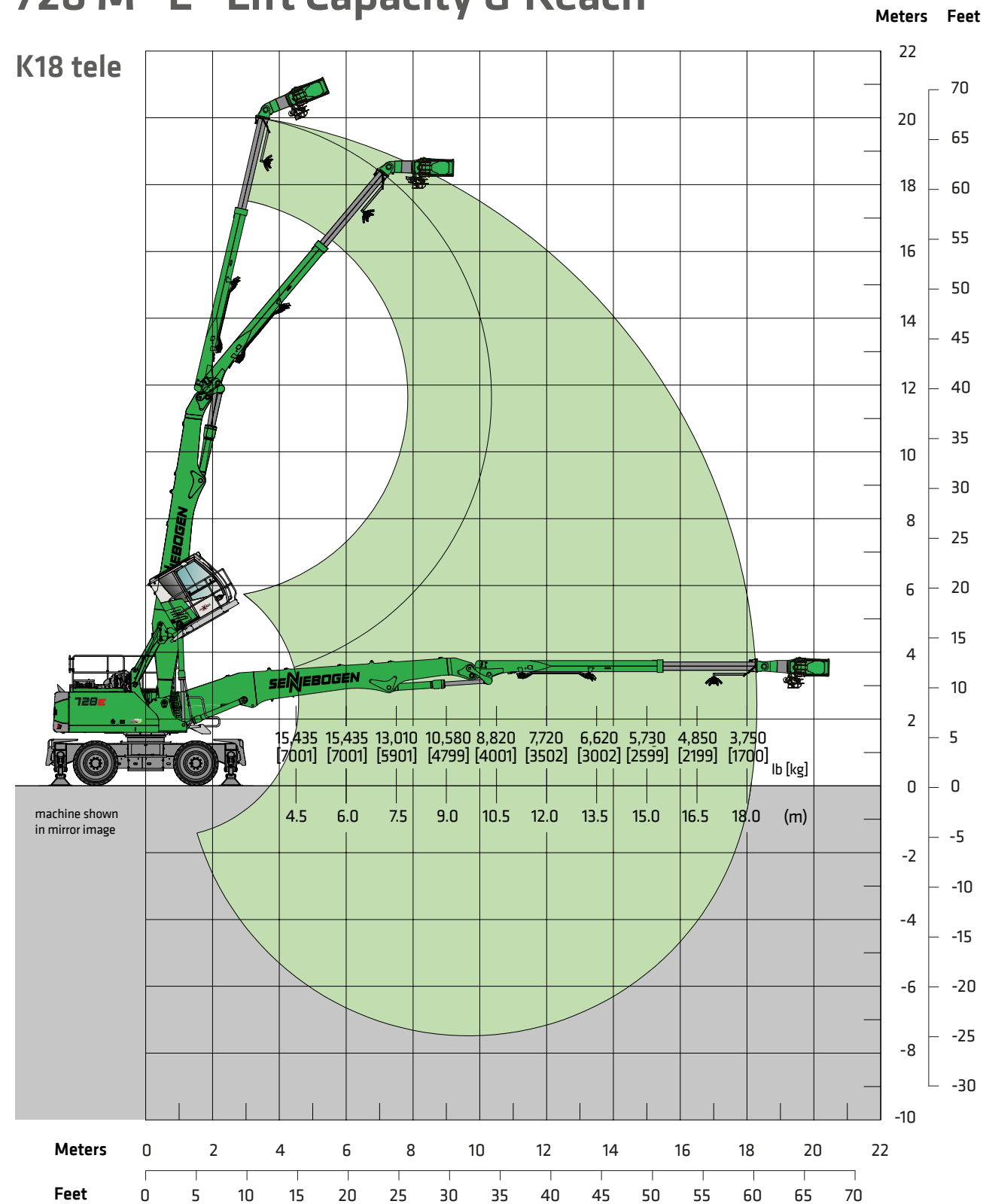
Standard Equipment ● Optional Equipment ○

728 R-HD “E” Dimensions



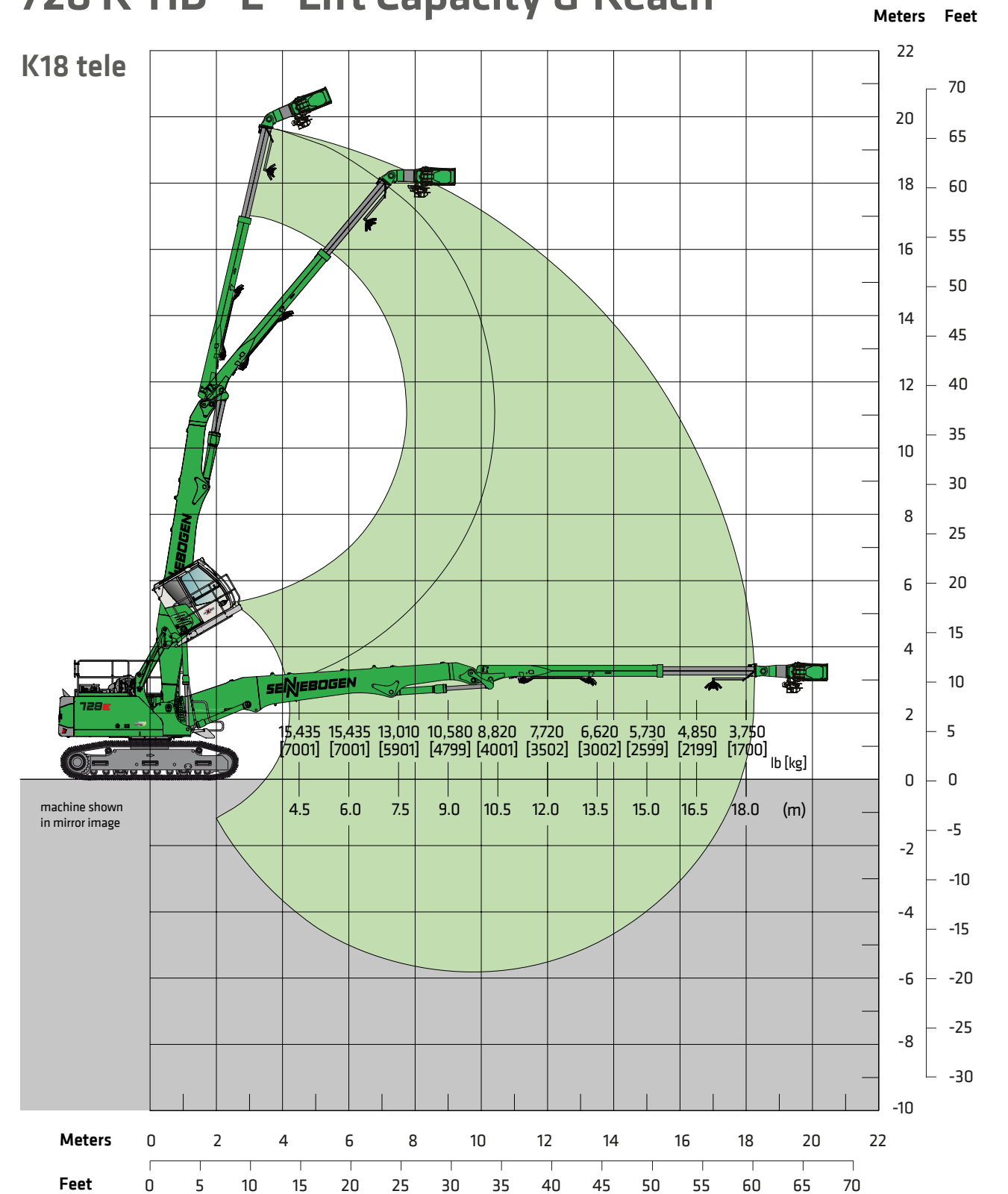
728 M "E" Lift Capacity & Reach

K18 tele



728 R-HD "E" Lift Capacity & Reach

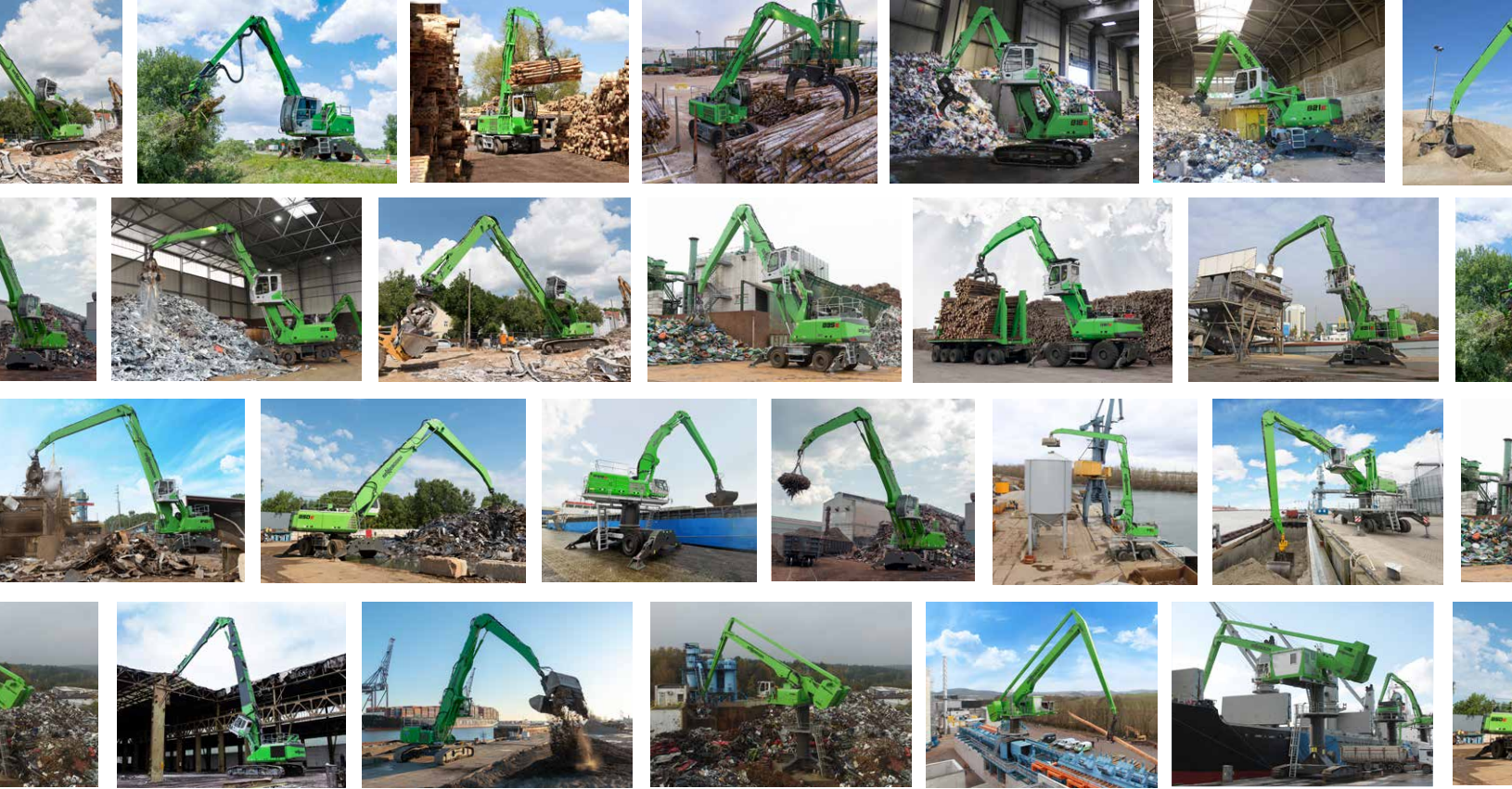
K18 tele



Lift capacities are stated in pounds. Values in [] are stated in kilograms. Indicated figures are based on ISO 10567 and do not exceed 75% of tipping and 87% of hydraulic capacity and machine standing on firm, level supporting surface. Loads are valid for 360° with machine support outriggers. Lifting capacities do not include working equipment such as orange peel grapples, magnets, clamshells, etc. The load point is the center line of the attachment pivot mounting pin on the stick. Their weights must be deducted from the numbers indicated in the lift charts. Please contact SENNEBOGEN or your local dealer for optimum attachment selection. The operator / user of the machine should be fully acquainted with the operator's & safety manuals provided by SENNEBOGEN. Capacities apply only to the machine as originally manufactured and equipped by SENNEBOGEN.

Lift capacities are stated in pounds. Values in [] are stated in kilograms. Indicated figures are based on ISO 10567 and do not exceed 75% of tipping and 87% of hydraulic capacity and machine standing on firm, level supporting surface. Loads are valid for 360° with machine support outriggers. Lifting capacities do not include working equipment such as orange peel grapples, magnets, clamshells, etc. The load point is the center line of the attachment pivot mounting pin on the stick. Their weights must be deducted from the numbers indicated in the lift charts. Please contact SENNEBOGEN or your local dealer for optimum attachment selection. The operator / user of the machine should be fully acquainted with the operator's & safety manuals provided by SENNEBOGEN. Capacities apply only to the machine as originally manufactured and equipped by SENNEBOGEN.

OUR COMPLETE LINE OF PURPOSE-BUILT MATERIAL HANDLERS



SENNEBOGEN[®]

SENNEBOGEN LLC
1957 Sennebogen Trail
Stanley, NC 28164 USA

Phone +1 (704) 347-4910
Fax +1 (704) 347-8894
Email sales@sennebogenllc.com