

# 340G

TELESCOPIC WHEEL LOADER



**Standard Lift Capacity**  
8,820 lb (4,000 kg)



**Operating Weight\***  
20,724 lb (9,400 kg)



**Vertical Reach**  
25'3" (7.7m)



**Undercarriage**  
Rubber Tired



**Engine**  
Cummins F3.8, Tier 4 Final  
134 HP (100 kW)

\*Operating weight can vary depending on the final machine configuration



# THE TELESCOPIC WHEEL LOADER WITH SML POWER.

Built for users who expect more than just a traditional telehandler, our Telescopic Wheel Loader combines the advantages of both telehandler and wheel loader technology in one unique machine. We call these advantages SML Power. A specialist team develops and produces this unique product range at our Wackersdorf plant.

## THE BEST OF BOTH WORLDS



We've created a new  
wheel loader category.  
Scan to learn more.

**Robust Steel Construction**  
for demanding applications





## Optimal Power Transmission

thanks to Z kinematics

**Hydraulically  
Elevating Cab**  
for greater visibility

## Multifunctional Hydraulics

for a wide range of attachments

## Powerful Drive Train

for high traction and driving speed.





**EVERYONE TALKS  
ABOUT VISIBILITY.  
WE ACTUALLY  
DELIVER IT.**

**ELEVATING CAB AND  
360° ALL-ROUND VISIBILITY**



Take a look inside  
the elevating cab  
and enjoy the view.



# OPTIMAL VISIBILITY CONDITIONS

## Optimal loading process

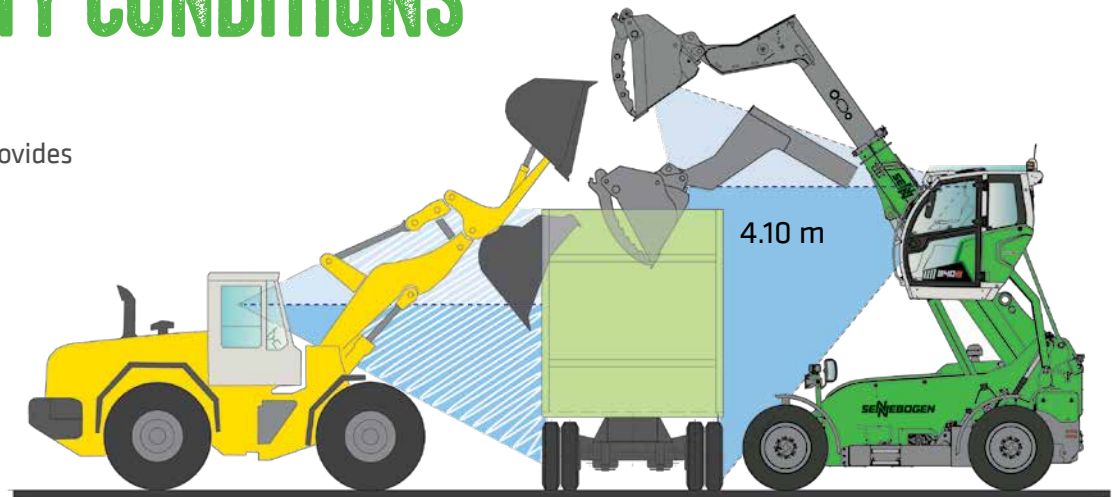
Elevating cab's 13'5" (4.1 m) viewing height provides an ideal view into the truck or container

## Safer maneuvering

Clear view of all four tires

## Greater visibility

True 360° all-round visibility thanks to large glass panels





**340G**

TELESCOPIC WHEEL LOADER

**GREATER RANGE.  
OPTIMAL STORAGE  
VOLUME.**







# ROBUST. DOWN TO THE LAST DETAIL.

## **STEEL FRAME**

The 340 G's high-strength solid steel frame meets the most demanding service life requirements and has been optimized using the FEM (finite element method). SENNEBOGEN's own steel construction experience ensures the best possible quality.

## **STEEL TELESCOPIC BOOM**

The state-of-the-art telescopic boom has been optimized for heavy-duty applications. The central positioning and sophisticated shape of the boom optimally transfers the forces into the frame. Stress-free operation enables end position damping on both sides of the telescopic cylinder.

The central- and side-guided design optimally absorbs all thrust forces so that the robust frame remains dimensionally stable. The operator can always see along the boom from inside the elevating cab.



**340G**

TELESCOPIC WHEEL LOADER

**STRONG LIKE  
NO OTHER.**





# WE'VE CREATED THE NEXT EVOLUTION IN WHEEL LOADER TECHNOLOGY

## Maximum break-away force

With the SENNEBOGEN 340 G, the Z kinematics steer the forces into the bucket to maximize power to the bucket operation.

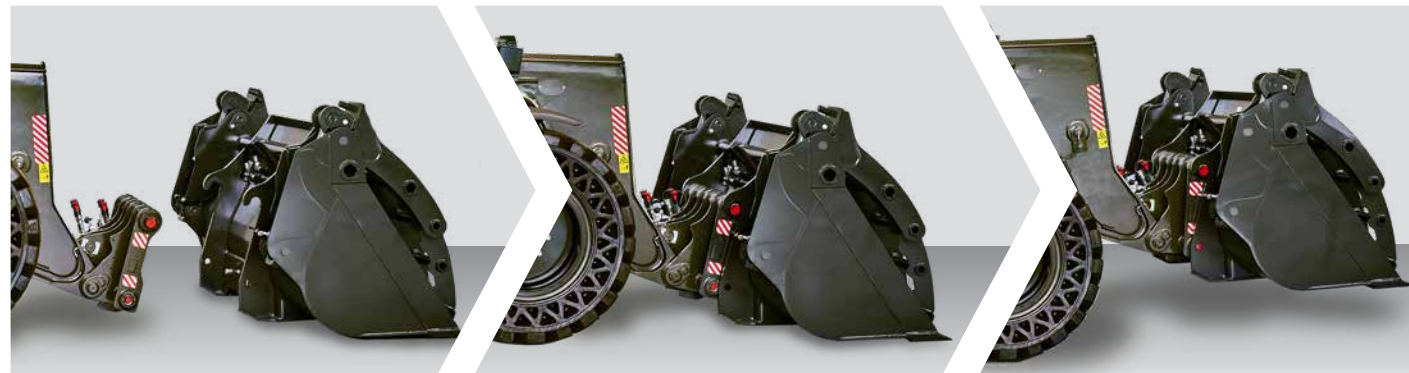
### Z KINEMATICS IN DETAIL

Watch the video to see how the Z kinematics work and the benefits they offer.



## Change tools at the push of a button

The SENNEBOGEN hydraulic quick-change system perfectly complements the 340 G's Z kinematics. With a reinforced frame, large-scale bolts, and dual-action locking cylinders, everything can be operated at the push of a button.





**340G**

TELESCOPIC WHEEL LOADER

# AN OPTIMAL MIX OF TENSILE FORCE AND SPEED.





# FULL POWER.

The infinitely variable drive system on the 340 G composed of a diesel engine, combined with a variable displacement piston pump, provides ideal performance in all operating conditions.

The drive control system automatically provides maximum torque or

maximum speed depending on the operating requirements of the 340 G. This is done automatically without any operator interference.

The standard maximum speed is 12.4 mph (20 km/hr) optionally 24.8 mph (40km/hr).



**COMPACT  
DRIVE®**

The 340 G's standard Compact Drive gearbox reduces fuel consumption by operating in a closed-circuit system. The adjustable hydraulic engine and gear drive work together to reduce fuel consumption and increase range.



# MULTICAB

## PREMIUM CAB.

Our premium MULTICAB allows operators to concentrate on their work and provides a comfortable work environment. The MULTICAB offers a 360-degree view, ergonomic controls, A/C, USB, plus 12- and 24- volt connections so operators can create their ideal cab set up.



Foot switches for infinitely adjustable cab height



Easy to use keypad



Air Conditioning is standard



Spacious cab with an air-suspended seat







# SOPHISTICATED TECHNOLOGY. ALWAYS RELIABLE.

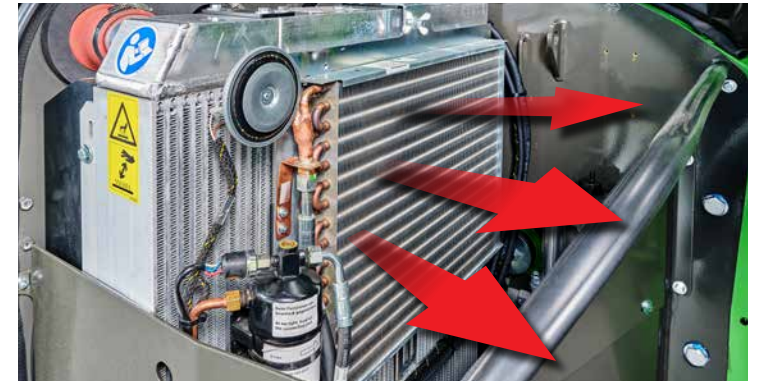


## STANDARD REVERSIBLE FAN



Video: The reversible fan protects the engine, especially in dusty conditions.

## Sophisticated down to the last detail



The powerful reversible fan is a standard feature. It reliably ensures free air intake and optimal cooling performance, even in adverse conditions.



The operational efficiency of the 42 gal (159L) diesel tank keeps the 340 G in service longer.





**DESIGNED FOR  
HEAVY-DUTY  
CONTINUOUS USE**



IT'S ALL ABOUT  
MAINTENANCE.  
SIMPLE AND  
UNDERSTANDABLE.



**1** All service points easy to access thanks to transversely mounted engine.



**2** Easy access to the cooler thanks to the folding air conditioning condenser.



**3** Telescopic boom slide guides are accessible from the outside for ease of maintenance and long service life.





## MAINTENANCE AND SERVICE MADE EASY



Clearly arranged and easily accessible components.



**4** The pipes leading inwards are optimally protected from damage by the boom and ensure a safe supply of hydraulic oil.



**5** The central lubrication system guarantees an extended service life through continuous and automated lubrication cycles.



**6** The arrangement of components offers the best possible access to the control block.



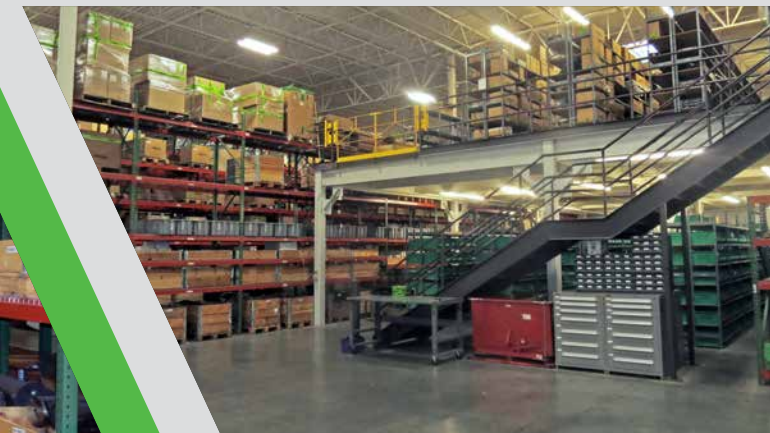
# BEYOND THE MACHINE

SENNEBOGEN is on a mission to deliver the lowest Total Cost of Ownership with the industry's best in aftersale service. Expert technical support, available parts and qualified servicing translate into less downtime and more productive years on the job.

- Our 100,000 sq. ft. (9,300 m<sup>2</sup>) headquarters in Stanley, NC is a multipurpose facility dedicated to supporting customers "beyond the machine."
- Our coast-to-coast network of factory-trained distributors, authorized service providers, and technicians sets the industry standard for outstanding field service.
- SENNEBOGEN application specialists provide customers and dealer sales staff with expert insight into unique challenges.
- SENNEBOGEN's in-house engineering provides custom machine solutions for any application.

The largest inventory of material handler parts in the Americas ensures fast delivery for repairs and service to every fielded SENNEBOGEN machine currently in operation.

**98% ORDER FULFILLMENT  
WITHIN 24 HOURS**





# TRAINING CENTER OF EXCELLENCE

Our dedicated Training Center in Stanley, North Carolina provides both primary and advance courses, free of charge for our customers. This free training is the same level as dealers and ASPs receive.

## Purpose-built For America's Best-Trained Technicians

The main demonstration bay allows hands-on access to machines while the meeting rooms and classrooms are all equipped with the technology required for today's interactive instruction methods.

Truly a Center for developing excellence in service and support for dealers, ASPs, and customer personnel. The SENNEBOGEN Training Center has earned accolades for the quality of the instructors, facilities, and materials.

## Free Training Courses Include:

Service • Parts Training • Tree Care • Operator Familiarization

Visit us online at  
[www.sennebogen-na.com/training](http://www.sennebogen-na.com/training)



5 Day Courses

### Service Level 1

**Class Size:** 8 Students

**Required:** Basic Technical Knowledge

**Course Content:**

- Machine Safety, Operation & Functions
- Preventive Maintenance
- Read & Understand Hydraulic & Electric Schematics
- Basic Troubleshooting:  
Magnet System, Hydraulics, Electrics

### Service Level 2

**Class Size:** 8 Students

**Required:** Completion of Level 1 Class

**Course Content:**

- Remote Troubleshooting
- Component Training & Repair
- Failure Analysis
- In-Depth Troubleshooting:  
Magnet System, Hydraulics, Electrics

———— **Course fees:** No charge to SENNEBOGEN dealers, staff, and customers. ————

Courses offered in English and Spanish sessions



# PURPOSE-BUILT FACILITIES

With nearly 1,000,000 sq. ft. (93,000 m<sup>2</sup>) of production space in our four manufacturing facilities in Europe, every step of production at SENNEBOGEN is planned to serve individual customer needs. Every critical component and process is completed in-house to assure quality, efficiency, and flexibility on the production line.

- We fabricate our own booms and sticks
- Our lineup is based on a full line of interchangeable platforms
- Our plants are designed to customize each machine, built-to-order
- Your machine is fully inspected and live-tested before it leaves the factory

Our four factories in Europe support the full range of capabilities for SENNEBOGEN to machine, fabricate, and assemble all major components to our own standards in-house.

*(Pictured here is our main plant in Straubing, Germany)*



Modular components used across multiple products allow SENNEBOGEN to deliver purpose-built machines competitively. Shared systems also streamline aftersale parts inventories for customers and their local SENNEBOGEN distributors.







Every configuration of a SENNEBOGEN begins as an identical machine up until the final stage of assembly. The unit is then mounted on your choice of undercarriage or platform, and completed with your preferred equipment and choice of cab.



## TECHNICAL DATA, EQUIPMENT

### OPERATING DATA

OPERATING WEIGHT <sup>1</sup>	20,720 lb (9,400 kg)
STACKING HEIGHT	25'3" (7.7 m)
MAX. LOAD CAPACITY (LSP 600 MM)	8,818 lb (4,000 kg)
MAX. LOAD CAPACITY AT MAX. HEIGHT	5,732 lb (2,600 kg)
MAX. LOAD CAPACITY AT MAX. REACH	3,747 lb (1,700 kg)
MAX. TRAVEL SPEED	12.5/18.6/24.8 mph (20/30/40 km/h)
TENSILE FORCE <sup>2</sup>	63 kN (14,163 lbf)
BREAK-AWAY FORCE ON THE SHOVEL <sup>3</sup>	65 kN (14,613 lbf)

### DIESEL ENGINE

TYPE	<u>Stage V</u> Cummins F3.8 FR95683 Nominal engine power: 134 HP (100 kW) @ 2,200 rpm Standard operating point: 134 HP (100 kW) @ 2,200 rpm ECO operating point: 122 HP (91 kW) @ 1,600 rpm
EXHAUST AFTERTREATMENT	DOC + SCR + DPF
DISPLACEMENT	232 cu. in. (3.8 L)
MAX. TORQUE	406 lb-ft (550 Nm)

### HYDRAULIC SYSTEM

OPERATING PUMP	Load sensing variable displacement axial piston pump
OUTPUT	37.4 gpm (170 l/min)
WORKING PRESSURE	4351 psi (300 bar)
OUTPUT ZH1 <sup>4</sup>	22 gpm (100 l/min)

### POWER TRANSMISSION

STEERING ANGLE	36°
DIFFERENTIAL LOCK	100% selectable on the rear axle
SERVICE BRAKE	Internal hydraulic brake
PARKING BRAKE	Hydraulic spring-loaded cylinder

### TANK CAPACITIES

DIESEL TANK	42 gal (159 L)
HYDRAULIC OIL TANK	37 gal (140 L)
SCR TANK	4 gal (15 L)

1) in line with ISO 6016 (weight of the machine with all standard equipment, without a load, with a full fuel tank, with other liquid tanks full [water, hydraulic oil, brake fluid] and the weight of the operator [165 lb(75 kg) ± 6.5 lb(3 kg)])

2) depending on machine version

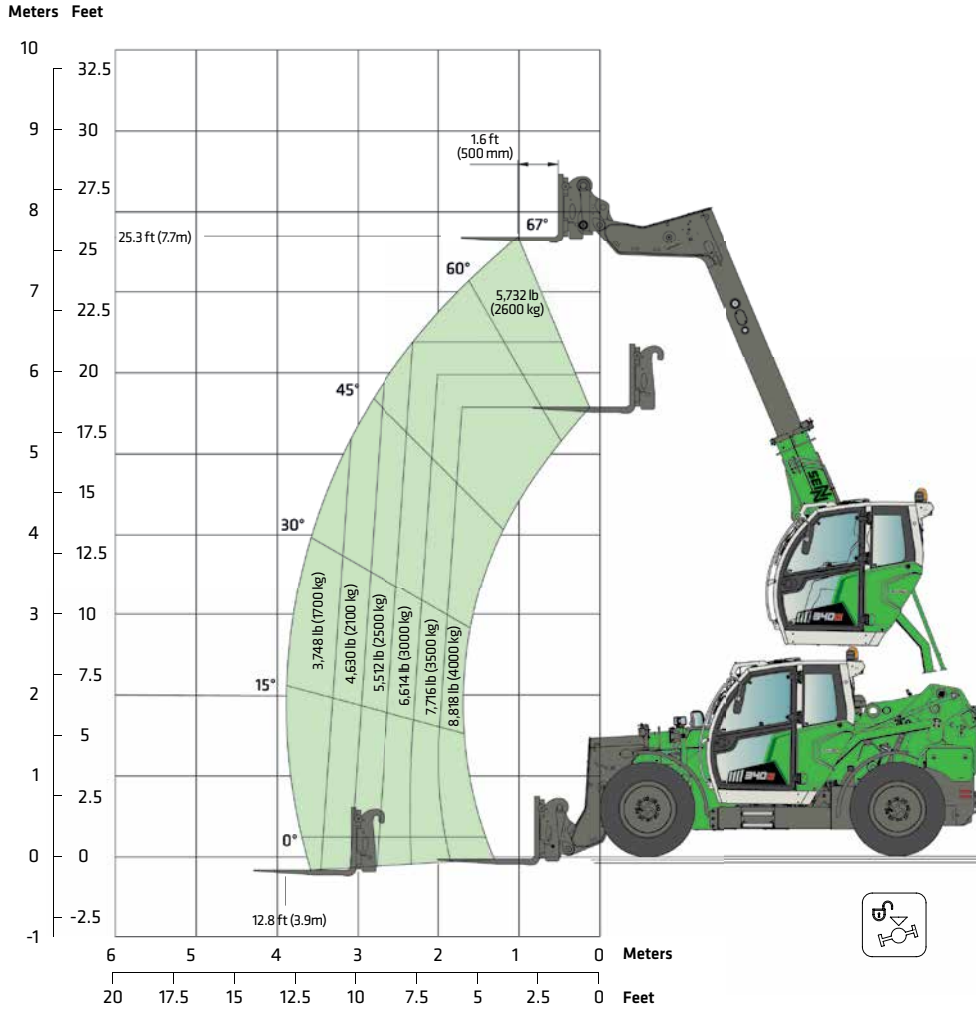
3) calculated

4) ZH = auxiliary hydraulics



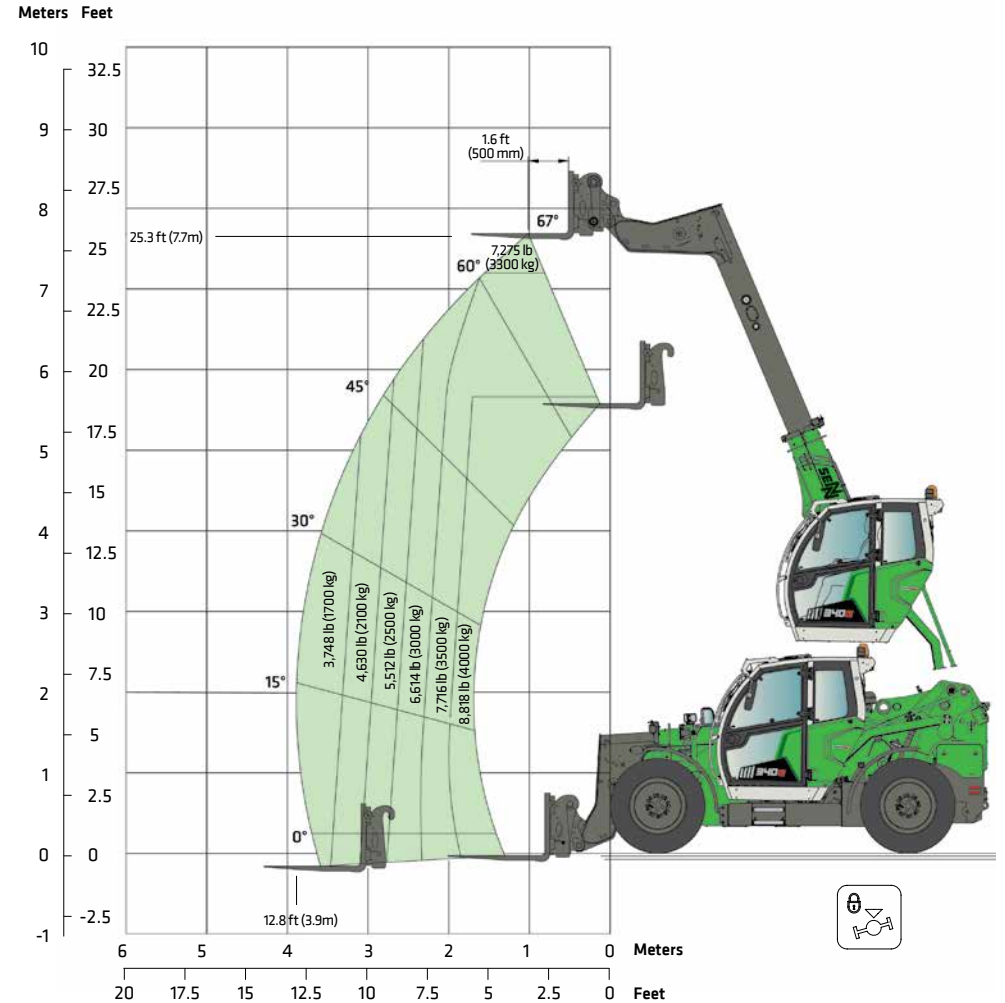
# LOAD RATINGS AND OPERATIONAL RANGE

Operation with lifting fork / without oscillating axle interlock



All values according to the safety standard DIN EN 1459 / DIN ISO 22915-14.  
They apply to the SENNEBOGEN standard lifting fork with a deviation of max. +/- 5° to horizontal.

Operation with lifting fork / with oscillating axle interlock

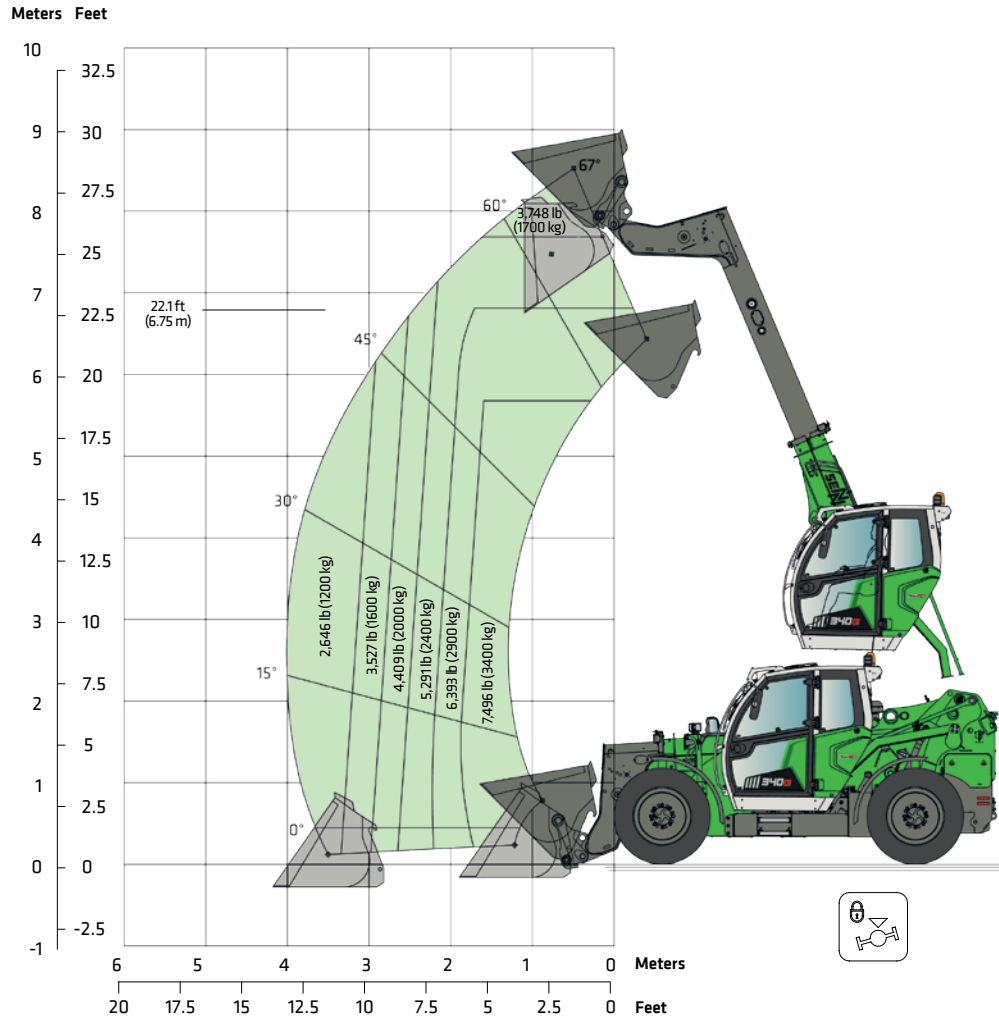


All values according to the safety standard DIN EN 1459 / DIN ISO 22915-14.  
They apply to the SENNEBOGEN standard lifting fork with a deviation of max. +/- 5° to horizontal.



# LOAD RATINGS AND OPERATIONAL RANGE

Operation with shovel / with oscillating axle interlock



**UP TO  
7,495 LB  
(3,400 KG)  
PAYLOAD!**

The specified load capacities apply only to the use of the SENNEBOGEN loading shovel with 70.6 ft<sup>3</sup> (2 m<sup>3</sup>) loading volume. The permissible bulk material densities must be taken into account. The dead weight of the shovel is included in the payload. Payloads should be moved in the transport position with the boom retracted and lowered.

**CLASSIFICATION:** Off-road forklift with variable reach - DIN EN 1459. Subject to technical changes. **ADDITIONAL OPTIONS AVAILABLE UPON REQUEST.**





13'5" (4.1 m) eye level

FULL POWER.  
FULL VISIBILITY.



# STANDARD EQUIPMENT AND OPTIONAL EXTRAS

### BASIC MODEL

340 G - SENNEBOGEN G-series telehandler (Tier 4 Final) 134 HP (100 kW)	●
Electric engine preheating 230 V incl. socket	○
Pre-separator for air filter, coarse particle degree of separation approx. 98 %	○
Reversible fan	●

### TIRES

400/70 R24 Multimax MP 527 multipurpose profile	●
500/70 R 24 Nokian TRI 2 Steel	○
375/85 24 Camso MPT solid rubber tires	○
VSDL D2A 15,5 R25 Bridgestone	○

### EQUIPMENT

Lifting fork	○
Tine adjustment device with side thrust	○
38.8 ft <sup>3</sup> (1.1 m <sup>3</sup> ) soil shovel without teeth for bulk material density up to 112.3 lb/ft <sup>3</sup> (1,800 kg/m <sup>3</sup> )	○
106 ft <sup>3</sup> (3.0 m <sup>3</sup> ) bulk bucket incl. reversible blade for bulk material density up to 31 lb/ft <sup>3</sup> (500 kg/m <sup>3</sup> )	○

88.3 ft<sup>3</sup> (2.5 m<sup>3</sup>) bulk bucket incl. reversible blade for bulk material density up to 56.1 lb/ft<sup>3</sup> (900 kg/m<sup>3</sup>) ○

56.5 ft<sup>3</sup> (1.6 m<sup>3</sup>) loading shovel for bulk material density up to 62.4 lb/ft<sup>3</sup> (1,000 kg/m<sup>3</sup>) ○

70.6 ft<sup>3</sup> (2.0 m<sup>3</sup>) loading shovel for bulk material density up to 68.7 lb/ft<sup>3</sup> (1,100 kg/m<sup>3</sup>) ○

56.5 ft<sup>3</sup> (1.6 m<sup>3</sup>) loading shovel with hydr. grab and reversible blade, for bulk material density up to 87.4 lb/ft<sup>3</sup> (1,400 kg/m<sup>3</sup>) ○

70.6 ft<sup>3</sup> (2.0 m<sup>3</sup>) loading shovel with hydr. grab and reversible blade, for bulk material density up to 62.4 lb/ft<sup>3</sup> (1,000 kg/m<sup>3</sup>) ○

### DRIVE AND STEERING

Continuously variable travel drive 12.5 mph (20 km/h)	●
Continuously variable travel drive 24.8 mph (40 km/h)	○
Crawling function and speed limiter	○
Oscillating axle interlock, rear axle	○

### TRAILER OPERATION

Shunting coupler 6,614 lb (3,000 kg)	●
Tow bar with automatic coupling; height-adjustable	○
Compressed air brake system for towing operation	○
Socket, 7-pin, rear, for trailer operation	○

### OPERATOR'S CAB AND EQUIPMENT



SENNEBOGEN Multicab IV Comfort operator's cab with roller sunblind for roof and windscreen, interior	●
Seat belt / 2"	●
Air-suspended comfort operator's seat with seat heating	●
Cab windscreen with safety glazing	●
Cab windshield with bullet proof glass	○
Hammer glass safety glazing for left and right cab windows incl. door	○
Skylight with safety glazing	●
Bulletproof glass in skylight	○
Wipers for skylight and rear window	○
FOPS protective guard (Stage 2)	○
Radio / USB, DAB, MP3, Bluetooth	○
Activated carbon filter for Multicab IV, 5 filter kits supplied loose	○
Hand-held fire extinguisher type PD6 (1 unit)	○
Cab lift memory function	○
Operation of the cabin lift via buttons on the control panel	○
Automatic switch-off of diesel engine via seat contact switch	○

● standard ○ optional



**COMPACT  
AND AGILE.**





# STANDARD EQUIPMENT AND OPTIONAL EXTRAS

### ADDITIONAL EQUIPMENT

Electric engine preheating 230 V incl. socket	<input type="radio"/>
Electric heater for hydraulic tank, 230 V	<input type="radio"/>
Pre-separator for air filter, coarse particle degree of separation approx. 98 %	<input type="radio"/>
Mirrors on right and rear	<input checked="" type="radio"/>
Camera system - basic package with 1 camera	<input type="radio"/>
Camera system - Premium package with 2 cameras	<input type="radio"/>
Central lubricating bar, easily accessible	<input type="radio"/>
Automatic central lubrication system	<input type="radio"/>
WK60-XS telescopic scale	<input type="radio"/>

### HYDRAULIC OIL FILLING

Hydraulic oil Shell Tellus S2 VA 46	<input checked="" type="radio"/>
Bio oil filling (PANOLIN HLP Synth 46)	<input type="radio"/>
Hydraulic oil Shell Tellus S4 VX 32 (low temperature oil)	<input type="radio"/>

### OPERATING MATERIALS WITHOUT HYDRAULIC OIL FILLING

Standard operating materials	<input checked="" type="radio"/>
Low temperature operating materials	<input type="radio"/>

### EQUIPMENT

Boom damping	<input type="radio"/>
Dirt scraper for telescopic arm	<input type="radio"/>

### ADDITIONAL FUNCTIONS FOR EQUIPMENT

Continuous operation ZH1/ZH3*	<input type="radio"/>
Continuous operation ZH2*	<input type="radio"/>
ZH3 auxiliary hydraulic circuit on boom head*	<input type="radio"/>
ZH2 auxiliary hydraulic circuit at the rear*	<input type="radio"/>
Automatic shovel return	<input type="radio"/>
Socket for front attachments, 7-pin	<input type="radio"/>

### LIGHTING AND TRAVEL ALERTS

2 LED lights on the basic boom	<input type="radio"/>
All-round lighting package incl. StVZO lighting (as per German road traffic licensing regulations)	<input type="radio"/>
1 flashing light on the cab	<input type="radio"/>
Headlight protective guard, front	<input type="radio"/>

### QUICK-CHANGE SYSTEM

SENNEBOGEN quick-change device - hydraulic	<input checked="" type="radio"/>
KRAMER quick-change device	<input type="radio"/>
JCB quick-change device	<input type="radio"/>
Manitou quick-change device	<input type="radio"/>
Volvo quick-change device	<input type="radio"/>

### EU TYPE-APPROVAL

EU type-approval according to Regulation (EU) No 167/2013	<input type="radio"/>
Vehicle class: T1a	

### PAINT FINISH / COATING

Standard paint RAL 6018 Green / RAL 7038 Light gray /RAL 7022 Gray	<input checked="" type="radio"/>
Special paint finish (1 color) in RAL color	<input type="radio"/>
Special paint finish for Multicab only in RAL color	<input type="radio"/>

### SENTRACK TELEMETRY SYSTEM

SENtrack telemetry system including connection fees	<input checked="" type="radio"/>
---	----------------------------------

● standard    ○ optional

\* ZH = auxiliary hydraulics



# POWERFUL WORK HYDRAULICS

## Powerful drive, economical consumption

Instantaneous signal processing between the joystick and the main control block ensures sensitive and responsive operation for all the machine's hydraulic functions.

In addition to the main functions – the lift cylinder, tilt cylinder, telescopic cylinder, and the elevating cab – the hydraulic system also has additional connections to operate hydraulic attachments.



## EQUIPPED FOR MANY USES



Image shows  
ZH1 and ZH3

**Auxiliary hydraulics 1 (ZH1)**  
For connecting attachments quickly and easily (standard)



**Pressure relief for ZH1**  
Change attachments mechanically at the push of a button (standard)



**Continuous operation of ZH1/ZH2**  
Adjust oil quantity on the membrane keypad (optional)



**4-pin socket (24 V)**  
For front attachments on the quick-release system (optional)

**Additional auxiliary hydraulics ZH2**  
Rear hydraulic connection for trailer or similar (optional)

**Auxiliary hydraulics ZH3**  
For operating demanding attachments with several hydraulic functions (optional)



# SHOVELS

With SENNEBOGEN shovels you get attachments optimized for the 340 G, which match the machine's high quality standards.

Our shovels are designed with highly wear-resistant materials and hardened components for the tough working conditions of the waste, recycling, and construction industries. The optimized shape and center of gravity is ideal for long-term continuous loads.

Unleash the full potential of the 340 G with SENNEBOGEN shovels:

- /// Utilization of maximum break-away force and payload
- /// Lower fuel consumption
- /// Reduced drive train load
- /// Shorter loading cycles
- /// Greater working comfort and safety with the hold-down shovel



## SOIL SHOVEL

38.8 ft<sup>3</sup> (1.1 m<sup>3</sup>) soil shovel without teeth

Bulk material density: up to 112.4 lb/ft<sup>3</sup> (1,800 kg/m<sup>3</sup>)

Shovel weight: approx. 1,279 lb (580 kg)



## LOADING SHOVEL

56.5 ft<sup>3</sup> (1.6 m<sup>3</sup>) loading shovel for bulk material density up to 75 lb/ft<sup>3</sup> (1,200 kg/m<sup>3</sup>), shovel weight approx. 1,300 lb (590 kg)

70.6 ft<sup>3</sup> (2.0 m<sup>3</sup>) loading shovel for bulk material density up to 68.7 lb/ft<sup>3</sup> (1,100 kg/m<sup>3</sup>), shovel weight approx. 1,433 lb (650 kg)



## HOLD-DOWN SHOVEL

56.5 ft<sup>3</sup> (1.6 m<sup>3</sup>) loading shovel with hydr. grab and reversible blade for bulk material density up to 87.4 lb/ft<sup>3</sup> (1,400 kg/m<sup>3</sup>), shovel weight approx. 2,645 lb (1,200 kg)

70.6 ft<sup>3</sup> (2.0 m<sup>3</sup>) loading shovel with hydr. grab and reversible blade for bulk material density up to 62.4 lb/ft<sup>3</sup> (1,000 kg/m<sup>3</sup>), shovel weight approx. 2,756 lb (1,250 kg)



## LIGHT-GOODS SHOVEL

88.3 ft<sup>3</sup> (2.5 m<sup>3</sup>) bulk shovel incl. reversible blade for bulk material density up to 56.2 lb/ft<sup>3</sup> (900 kg/m<sup>3</sup>), shovel weight approx. 1,742 lb (790 kg)

106 ft<sup>3</sup> (3.0 m<sup>3</sup>) bulk shovel incl. reversible blade for bulk material density up to 31.2 lb/ft<sup>3</sup> (500 kg/m<sup>3</sup>), shovel weight approx. 1,852 lb (840 kg)



# TIRES

No matter what the application, it's the ground that forms the contact surface with the machine. Only the right tires can provide optimum safety.

We will provide you with the best tires for your application. Rely on our experience and get advice on achieving the best performance, safety, and service life.



## STANDARD

BKT MULTIMAX MP 527  
400/70 R24

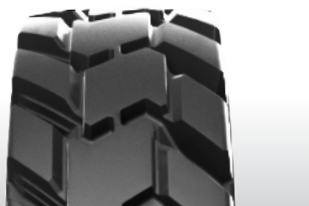
Universal multipurpose tires with first-class traction for agro-industrial applications



## INDUSTRY

NOKIAN TRI 2 STEEL  
500/70 R24

MPT steel-reinforced profile for industrial and recycling plants



## RECYCLING

CAMSO MPT 793S  
375/85-24

Solid rubber tires  
12.00-24.  
Width approx. 11" (300 mm)



## OFFROAD

15,5 R25 BRIDGESTONE  
VSDL D2A

Extremely robust LS pneumatic tires for maximum protection e.g. in scrap yards, quarries, or for tough recycling applications



Recycling tires



# LONG WHEELBASE. HIGH STABILITY.

## HIGH MANEUVERABILITY AND LONG WHEELBASE

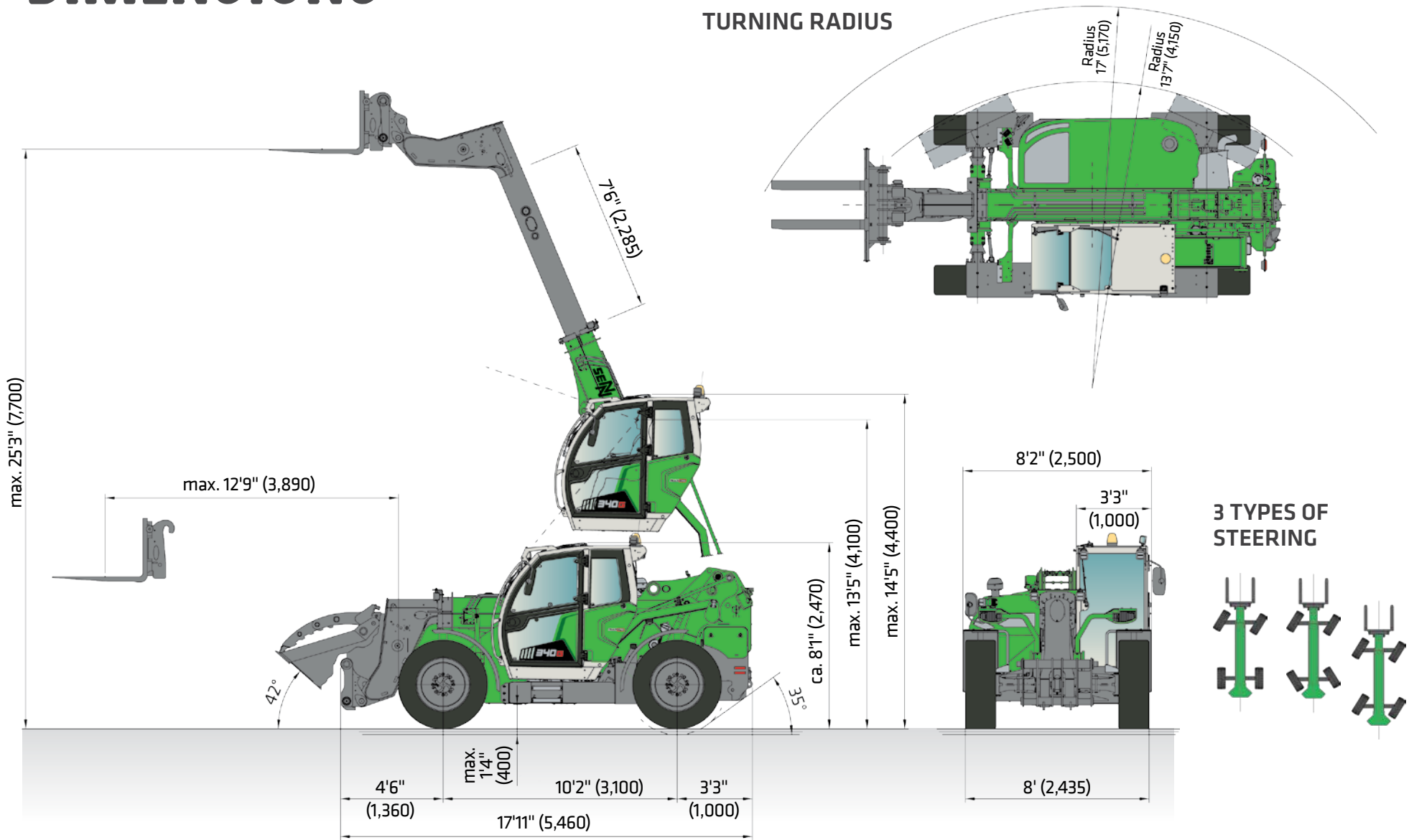


This video shows you how surprisingly agile our telehandler is.

3.10 m



# DIMENSIONS

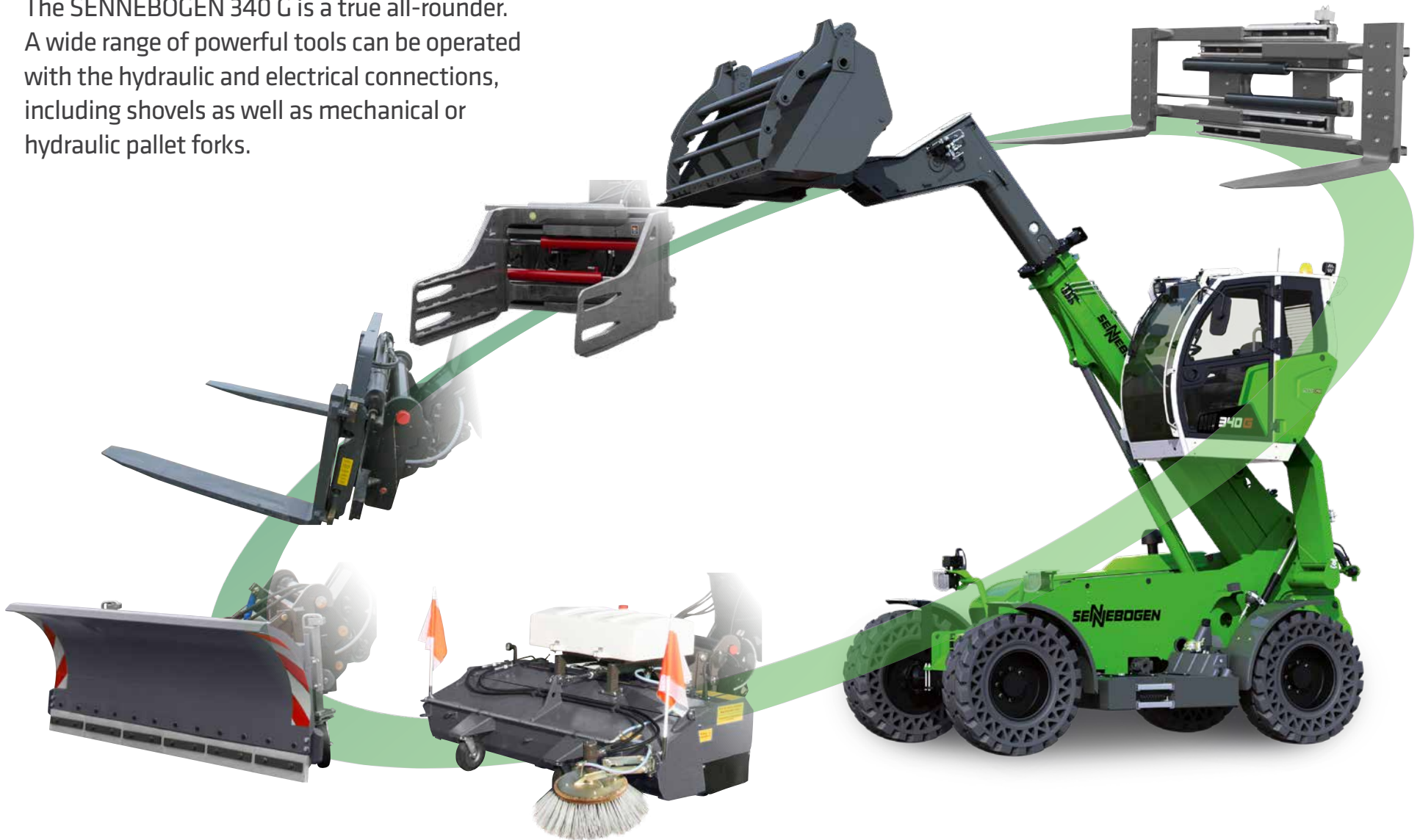


Measurements in (mm) **CLASSIFICATION:** Off-road forklift with variable reach - DIN EN 1459  
Subject to technical changes. Additional options available upon request.



# YOUR MACHINE. MULTIFUNCTIONAL.

The SENNEBOGEN 340 G is a true all-rounder. A wide range of powerful tools can be operated with the hydraulic and electrical connections, including shovels as well as mechanical or hydraulic pallet forks.





# SERVICE: KEEP IT SIMPLE WITH MANAGEABLE TECHNOLOGY.



Clear control panel and display console including error code display.



Spacious access to the engine compartment with just one handle. The side plate of the engine nacelle can also be removed.



Ensure the best possible support for your 340 G with the industry's largest network of factory-trained technicians.

## OUR SERVICE PHILOSOPHY.



Reliable and practical technology makes life easier. We rely on hydraulics and electronics where they are most useful.



A streamlined process with cost-effective components enables self-directed maintenance.



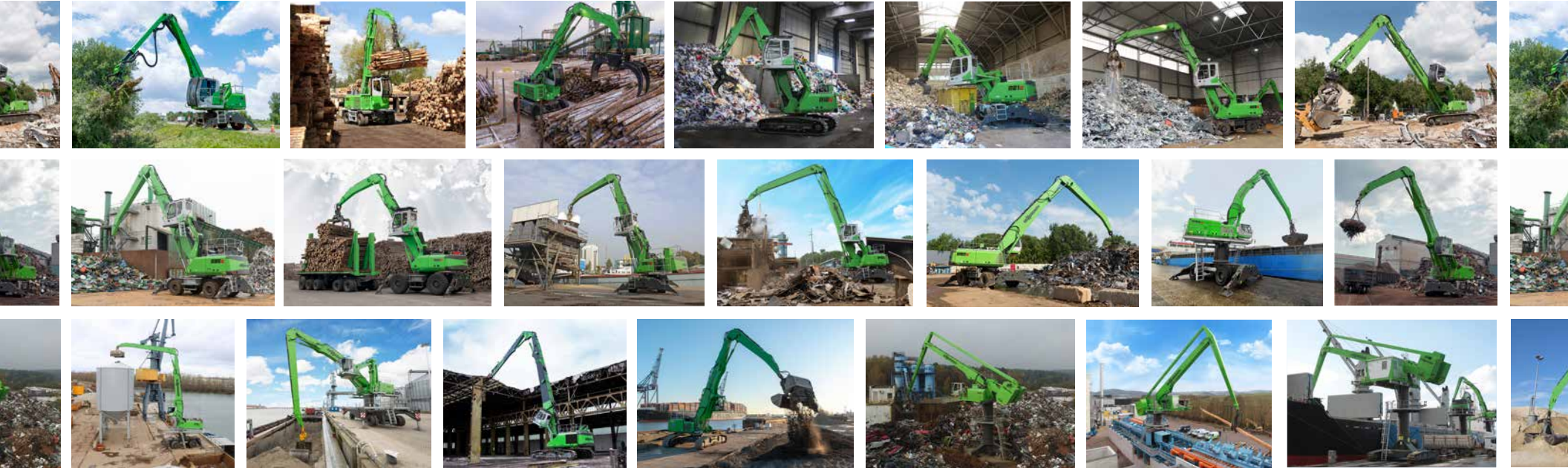
The central electrical distributors and electronic modules facilitate maintenance, service, and troubleshooting.

## EXTENDED WARRANTY

SENNEBOGEN guarantees the steel components of the 340 G (in particular the frame and telescopic arm) for **three years** or **10,000 operating hours**, whichever comes first.



# OUR COMPLETE LINE OF PURPOSE-BUILT MATERIAL HANDLERS



**SENNEBOGEN**<sup>®</sup>

**SENNEBOGEN LLC**  
1957 Sennebogen Trail  
Stanley, NC 28164 USA

Phone +1 (704) 347-4910  
Fax +1 (704) 347-8894  
Email [sales@sennebogenllc.com](mailto:sales@sennebogenllc.com)